

EMBELLISH LABELS INTO CAPTIVATING WORK OF ART



Redefining Efficiency, Quality and Versatility

The JETSCI[®] Global Digital Embellishment Presses redefines the standards of efficiency, quality, and versatility in label embellishment. Engineered to meet the evolving demands of the modern **label industry and brands** alike, this press is a **game-changer in the world of printing and converting**.

Experience the Difference with JETSCI® Global Digital Embellishment Solutions

Driven by Inkjet technology using UV curable fluids for the embellishment process in combination with conventional or digital printing processes **dSpark hybrid+** enhances product labels and packaging to new heights, offering a complete solution to label and packaging printers and converters. By harnessing the advantages offered by both the technologies, it offers unparalleled versatility, enabling users to produce a wide range of embellished labels with exceptional quality and speed.

Unparalleled Flexibility

Not Just Short Runs

Elevating Marketability

**Enhanced Perceived Value
& Brand Expectations**

Unleash Creativity with Cutting-Edge Technology

In today's competitive market, perception is everything. The JETSCI® Global Digital Embellishment Presses helps you exceed customer expectations by enhancing the perceived value of your products. With **premium quality embellishments and impeccable finishes**, your brand will be associated with excellence, quality, and sophistication.

Whether you are a **label printer, converter, or brand owner**, our press offers unparalleled performance, reliability, and innovation. Elevate your label designs, enhance your brand's presence, and stay ahead of the competition with JETSCI®.



Versatility to Meet Your Needs

Whether you're looking to add a touch of elegance with **foiling or create a tactile experience with raised textures**, our presses offers unparalleled versatility to bring your creative vision to life. With customizable options and flexible features, you have the freedom to explore endless design possibilities.

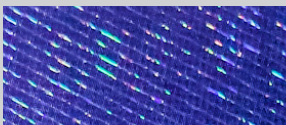


Partner with
JETSCI® Global,
a brand of
Monotech® Systems Ltd.
for Success

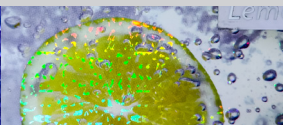
Precision and Quality, Every Time

With JETSCI®, precision and quality are non-negotiable. Our Digital Label Embellishment Press ensures impeccable results with every print, delivering consistent and flawless embellishments that enhance the overall aesthetics of your labels. Say goodbye to inconsistencies and hello to perfection.

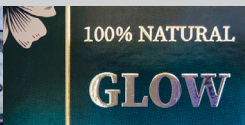
With JETSCI® Digital Label Embellishment Presses, the possibilities are endless. **Elevate your brand's presence, captivate your audience, and leave a lasting impression** with labels that truly stand out. Partner with us and take your label designs to new heights of creativity and excellence.



Textured



Spot Varnish



Embossed Effect

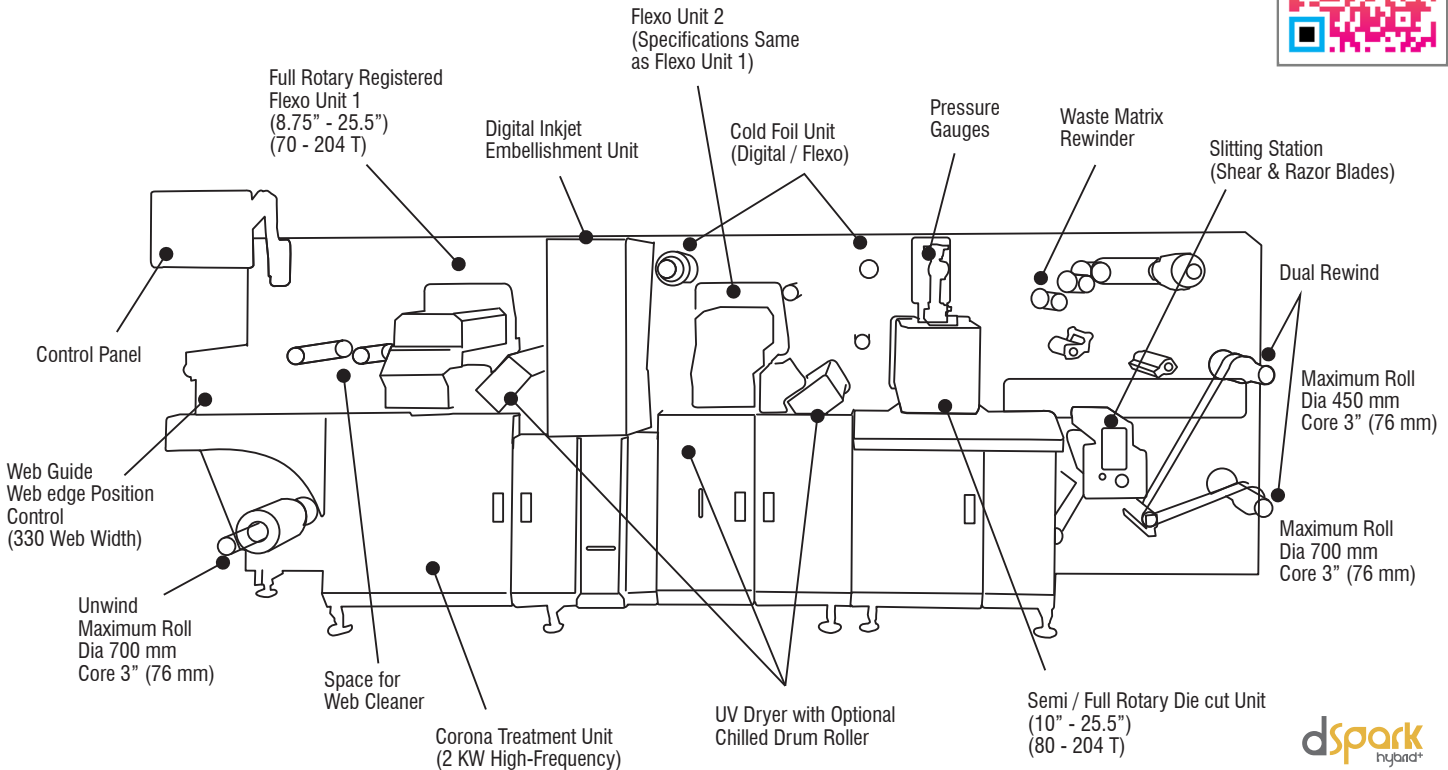
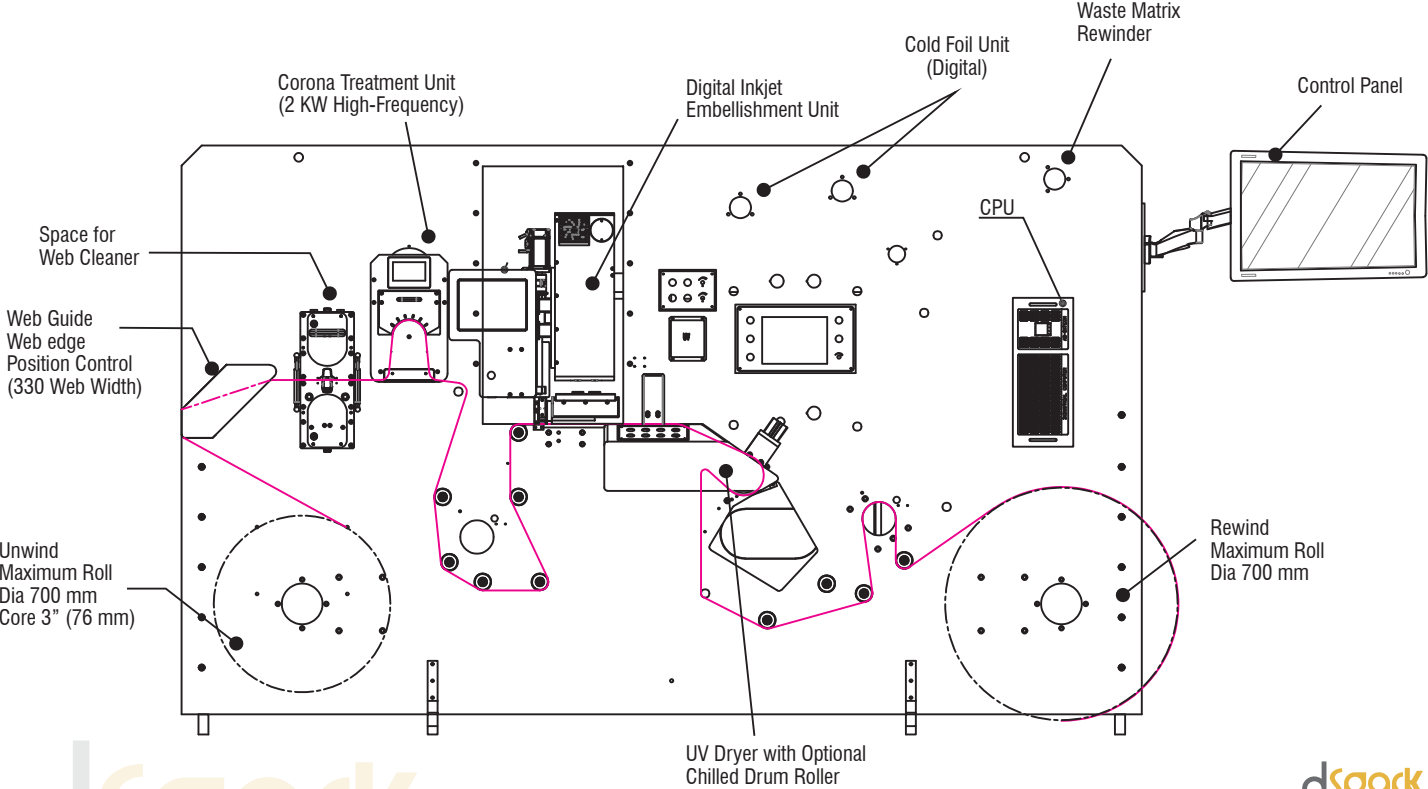


Cold Foiling



Silk-Screen Effect

Expand Beyond CMYK with Embellishment



Technical Specifications

	dSpark	dSpark hybrid +
Print Width	Up to 330 mm	
Print Resolutions	Up to 1440 DPI	
Maximum Speed	Up to 35 m/ min (Depending on Substrate & Hi-Build)	
Unwinder	Maximum Roll Dia 700 mm, Core 3" (76 mm)	
Corona Treatment Unit	2 KW High-Frequency	
Space for Web Cleaner	Available	
Multiple Foil Options	Standard - with Differential Shafts	
Pre / Post- Flexo Unit	N/A	Full-Rotary Registered Flexo Unit
Cold Foil	Digital	Digital / Flexo
*UV Dryer with Optional Chilled Drum Roller	Available	
Semi / Full Rotary Die Cut Unit	N/A	Yes (10" - 25.5" 80 - 204 T)
Waste Matrix Rewinder	Available	
Slitting Station	N/A	Shear & Razor Blades
Rewinder	Single Rewind Maximum Roll Dia 700 mm	Dual Rewind Maximum Roll Dia 1- 450 mm Maximum Roll Dia 2- 700 mm
Varnish / Glue Type	UV Curable	
Tank Size	5 Litres	
Input Format	PDF, Hi- Resolution JPEG, PNG, TIFF,	
Industrial Controller Configuration	Industrial PC with 64- Bit Windows, 64 GB RAM, 512 GB SSD	
Operating Environment	20-26°C, Humidity 40-60%, Non Condensing	
Air Supply Requirement	Compressed Air, 6-8 Bar, Moisture & Oil Free	
Electrical Requirements	Inkjet Print Module- 220-240 V, 50-60 Hz, 10A	
	Web Transport	
	3 Phase, 410-440 V, 50-60 Hz, 24 KW	3 Phase, 410-440 V , 50-60 Hz, 45 KW
Dimensions	2870 x 1850 x 1700 mm	4600 x 1660 x 1700 mm
Weight** (approx.)	1600 Kg	2500 Kg

*Chilled Unit is in Customer Scope

**Varies as per configuration



Proudly Made in India

Introduced
in Dec' 2012



In-house
manufacturing
and integration



In-house
application
development



Proficient
and seasoned
R&D team



Tailored solutions
for customer
application needs



Exceptional
customer
satisfaction



About JETSCI® Global



India's pioneer integrator
of high-speed industrial
inkjet systems



Global channel network with
installations spanning over
20 countries



Successful execution
of numerous turnkey
solutions and projects



Innovative technology
solutions for Label Printing
and Track & Trace



Swift returns on
investments and low
total cost of ownership



Top-tier after-sales
support

www.jetsciglobal.com



MONOTECH SYSTEMS LIMITED

Head Office : 8B, "Chaitanya Exotica", 24 Venkatnarayana Road, T. Nagar, Chennai - 600 017, Tamilnadu, India
Phone: +91 44 2815 7928/7894/7933, 4350 2232

R&D Center : B-15, InfoCity Phase 1, Sector 34, Gurugram-122 001, Haryana, India
Phone: +91 124 2371 771, +91 999 958 5324 Toll free (India): 1-800-102-4567
Email : jetsciglobal@monotech.in | www.jetsciglobal.com | www.monotech.in



monotechsistemas



monotechsistemas



monotechsistem

All the product models, color and components are for graphical representation only; actual product may vary. Monotech Systems reserves the right to change specifications without prior notice.
All logos and brands mentioned in this collateral are trademarks and copyrights of their respective brand owners.

